

KCI Summer Start Programs Application 23-24

Thank you for your interest in KCI Programs for the 2023 to 2024 school year! To streamline our application process, we have created one common application for each of the three programs: MERIT, STEAM, and SPACE. Unfortunately, all of our programs will be running concurrently, so you are not able to participate in more than one during the year. You will be able to apply to more than one program with this application, however. Thank you again, and we're looking forward to reading your application!

Deadlines

Early consideration - Apply by Sunday, March 26, 2023

General consideration - Apply by Sunday, April 30, 2023

If you wish to review program details before beginning, you can do so [on the KCI website](#).

Justin and the KCI Team
Director of Programs and Partnerships
jsewell@krauseinnovationcenter.org

* Required

1. Your FIRST Name *

2. Your LAST Name *

3. How did you hear about the KCI 23-24 Summer Programs? *

Mark only one oval.

- Colleague Recommendation
- Email
- Social Media
- At a Conference
- Web Search
- At a KCI event or program
- Other: _____

About You

Please provide your personal information below.

4. Work Email Address *

5. Personal Email Address *

6. What is the best phone number to reach you? *

7. Home Street Address (Including Apt. or Unit #) *

8. City *

9. State (to be considered for the grant-funded scholarship, you must be a CA resident) *

10. Postal Code *

11. Gender *

Mark only one oval.

- Female
- Male
- Non-binary
- Prefer not to say

12. Ethnicity *

Mark only one oval.

- American Indian or Alaska Native
- Asian
- Black or African American
- Hispanic or Latino
- Native Hawaiian
- Other Pacific Islander
- White
- Prefer not to say
- Other: _____

You As
A
Teacher

Please let us know about your
prior teaching experience.

13. Current Job title *

If you will be changing jobs, please let us know
what your job will be for the 23-24 school year.

14. Current School District *

15. Current School Site *

16. Is your school considered Title 1? *

Mark only one oval.

Yes

No

Not Applicable

17. Number of Years Working in Education *

18. Subject Area/s (Check all that apply) *

Check all that apply.

Multiple subjects (elementary school)

Math

Science

Career and Technical Education

English/writing/literature

Social studies/history

World languages (foreign languages)

Visual arts

Performing arts

Physical education/health

Special education

AVID/Leadership

Site and/or district administration

TOSA/Site Coach

Technology

Other: _____

19. Grade/Age Levels You Currently Support *
(Check all that apply)

Check all that apply.

- I'm a pre-service teacher
- Primary (TK-2)
- Elementary (3-5)
- Middle School (6-8)
- High School (9-12)
- Community College or University
- Adult Education
- Site Administration/ TOSA
- District Administration/ TOSA
- Library/ Makerspace/Media Specialist
- Other: _____

Open
Ended
Questions

Please try to limit your answers to 300 words or less. However, please understand that we are looking for quality of answer, so if the question below consists of only a few words, we will not consider you to be a serious candidate and will discard your application.

You are encouraged to compose your answers in another document and then copy/paste them here so that you don't risk losing your responses.

20. Please describe your personal teaching/education philosophy. *

21. Who are your learners and what do you love about teaching this particular group? *

22. KCI Programs are more than just PD. We deliberately build cohorts with the intention of developing a community of learners and a network of support that lasts well beyond the program dates. What unique characteristics would you bring to a cohort? How do you like to participate and contribute within learning communities? *

There are no wrong answers here. This is an opportunity for you to tell us the best parts of who you are as a person. Don't be afraid to show off!

Program Selection

Please select a program below to go to the program-specific application questions. If you wish to apply to more than one program, you will be able to come back to this page afterwards and select a different program.

23. Which program would you like to apply to? *

You will be able to come back to this page later if you want to apply to more than one program.

Mark only one oval.

- MERIT *Skip to question 24*
- SPACE *Skip to question 31*
- STEAM *Skip to question 37*

MERIT- Specific Questions

24. Which section of MERIT are you applying for? *

Mark only one oval.

- Hybrid: In person at the Krause Center in Los Altos, CA June 20-24 and Online June 26-30
- Exclusively Online: June 20-24 and June 26-30
- I am open to either section

Program Description

Please read the program information below in its entirety. You can also [view it in a new tab here](#).

ARE YOU READY TO *Transform*

YOUR EDUCATION CAREER?



Yes? Then look no further!

Here at the **Krause Center for Innovation** we specialize in professional learning for educators. Since 2001, our **MERIT Program** has helped teachers bolster their curriculum with technology-enhanced learning activities to motivate, **challenge and inspire** the diverse learners and leaders of the future.

If you're ready to **embrace innovation** and **expand your support network**, apply for KCI's MERIT Program today.

It's transformational.

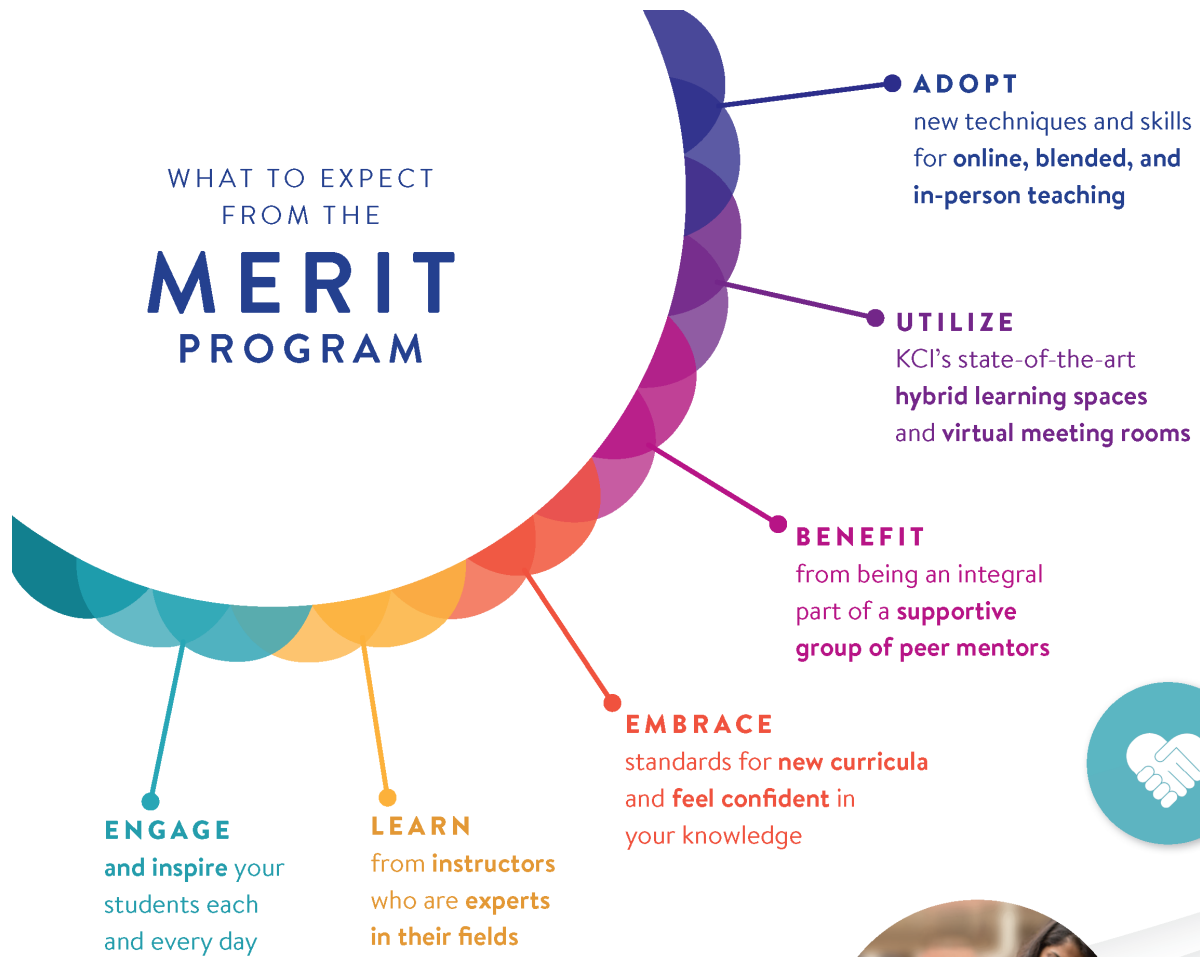


Transforming
Teaching & Learning



KRAUSE CENTER *for* **INNOVATION**

WHAT TO EXPECT FROM THE MERIT PROGRAM



Transform Your Education Career

LEARN MORE ABOUT KCI'S MERIT PROGRAM AND APPLY FOR THE NEXT COHORT!



[KRAUSEINNOVATIONCENTER.ORG/PROGRAMS/MERIT](https://krauseinnovationcenter.org/programs/merit)

WHAT IS THE MERIT PROGRAM?

As the premier educator development program at the Krause Center for Innovation, MERIT (previously named “Earn While You Learn”) provides technical skills in a vibrant participant-centered learning environment.

MERIT (Making Education Relevant through Innovative Technology)

is a 10-month program that starts each spring, includes a two-week intensive summer institute, and continues with follow-up classes in the fall and winter quarters. The diverse TK-14 participants range in age and experience with technology. MERIT aims to make learning and teaching more dynamic and fun, demonstrating that engaging technology in the hands of a well-trained teacher can improve student learning.

WHAT MAKES MERIT UNIQUE?

Our MERIT program offers participants the opportunity to engage as a learner and then debrief the learning as an instructor. We celebrate the importance of an inclusive, equity-based classroom, honoring differences, and translating both visible and invisible identity markers. MERIT provides flexible, project-based, hands-on learning through the use of key software and tools. The curriculum is designed to inspire participants with a focus on:

- Understanding how to empower all types of learners and the importance of mindfulness activities in the classroom
- Training on the importance of self-care for educators
- Utilizing accountability partners within your learning cohort
- Designing inclusive and responsive learning environments
- Strengthening your community by inspiring and motivating students
- Earning a California Certificate of Achievement as an Educational Technology Specialist (plus 12 continuing ed units) upon completion of program



WHAT PEOPLE ARE SAYING

“KCI’s MERIT Program was life-changing! Hands down the most enriching and impactful choice I’ve made in my teaching career. MERIT is a must for every educator.”

“MERIT was so much fun! Makes me smile just thinking about it.”

“Navigating remote learning during the pandemic was really challenging and stressful. KCI’s MERIT team supported me every step of the way. I’m forever grateful.”



MERIT welcomes participants throughout the state of California who serve TK-14 learners in all capacities!

MERIT TOPICS & THEMES

- Digital media, podcasts, multimedia and empowering student voices
- Social media tips for students and educators
- Creativity, communication and collaboration
- Digital citizenship and digital literacy
- Student-centered learning activities
- Critical thinking and design thinking
- Innovation for all learners
- Emotional intelligence
- Problem solving

[KRAUSEINNOVATIONCENTER.ORG/PROGRAMS/MERIT](https://www.krauseinnovationcenter.org/programs/merit)

- 25. Based on the description of the program above/on the KCI website, please describe why you want to participate in this program and how you plan to use what you learn. Please limit your response to 300 words or less. *

- 26. Are you applying to this program as a part of a team? *

Mark only one oval.

Yes

No

- 27. If so, please name the other people on your team.

*Please note that each person on your team must submit **their own individual** application!*

28. Did one or more of the following KCI Ambassadors encourage you to apply to this program? *

Check all that apply.

- Erin Asamoto
 Terry Lien
 Stacy Kratochvil
 Sandhya Raman
 Verity Oliff
 No

29. I understand and agree to attend and participate in ALL DATES of the program unless a personal or family emergency occurs. *

Please review the dates above and make absolutely sure you can commit to them before selecting "Yes"!

Mark only one oval.

- Yes

30. Would you like to apply to another KCI program? *

Mark only one oval.

- Yes, please take me back to the program selection page *Skip to question 23*
 No, please take me to the final confirmations and agreements *Skip to question 44*

SPACE-
Specific
Questions

There is only one section of the SPACE program. It will be entirely in person at the Krause Center in Los Altos Hills, CA on June 27-29 and July 25-27.

Program Description

Please read the program information below in its entirety.

You can also [view it in a new tab here](#).

ARE YOU READY TO TAP INTO YOUR INNOVATIVE POTENTIAL WITH KCI'S

SPACE

PROGRAM?



Here at the **Krause Center for Innovation** we specialize in professional learning for educators. The **SPACE Program** is designed for K-14 teachers who want to grow as Makerspace Coordinators at their sites. **SPACE – Supporting Prototyping And Creativity in Education** – participants are those interested in honing their maker skills or seeking employment in fabrication laboratories and makerspaces within community centers, libraries, and educational settings. The program provides instruction and support for **building models and prototypes, strategies to spark innovation and invention, and creative problem-solving and collaboration.**

Makerspace

EXPLORE • THINK • MAKE
TINKER • COLLABORATE
LEARN • DESIGN



KRAUSE CENTER *for* **INNOVATION**

WHAT TO EXPECT FROM THE

SPACE PROGRAM



KRAUSEINNOVATIONCENTER.ORG/SPACE

WHAT IS THE SPACE PROGRAM?

The SPACE Program invites participants to be makers, recognizing and practicing creativity in everyday life. Each activity and project includes a focus on managing learning experiences that empower students to think outside the box and be problem solvers.

There are three phases of the SPACE Program: 1) Design Thinking, 2) Computational Thinking, and 3) Design Challenges. Each phase is framed by KCI's **Ten Maker Mindsets** which include:

- **Wonder:** Notice inspiration and where it comes from.
- **Tinker:** Mess around with things to see what they do.
- **Collaborate:** Share your ideas and work with others.
- **Design:** Organize your thoughts and ideas into specific solutions.
- **Prototype:** Build models to test them out, revising as needed.
- **Solve Problems:** Use thinking routines to analyze situations and develop solutions.
- **Take Risks:** Try new things, even if you aren't sure they will work.
- **Celebrate Failure:** Embrace fails and share them so that everyone can learn and celebrate with you.
- **Extend:** Consider where you can apply what you are learning to other parts of your life.
- **Have Fun:** Enjoy the process and embrace the mess.



Additionally, each SPACE participant earns a California Certificate of Achievement as a Makerspace Coordinator plus the following upon program completion:

- 18 continuing education units
- 3-year access pass to KCI's Makerspace

WHAT MAKES THE SPACE PROGRAM UNIQUE?

KCI's SPACE Program offers hands-on learning that empowers educators to participate as makers and experience the potential of a maker learning environment firsthand. As participants move through the activities and projects, they are guided by expert instructors to consider the roles of the teacher and makerspace coordinator in the implementation of maker education in their environments. Participants receive direct equipment training on 3D printers, laser cutters, vinyl cutters, and more. Creativity and play infuse every activity and are central to the learning experiences both in the program and back in the school communities.



WHAT PEOPLE ARE SAYING

“

The SPACE Program activities were wonderful and engaging—challenging for adults yet still accessible to younger children. Content was relevant and I appreciated the time to play and explore!

“

Thinking about design from an empathetic standpoint has provided a more purposeful approach to my work and my art.

“

This was my first experience with KCI, and I loved every minute of it! I would definitely recommend to friends and colleagues. I'm using my new skills in the classroom every day.



Our **SPACE Program** welcomes participants throughout the state of California who serve K-14 learners in all capacities!

[KRAUSEINNOVATIONCENTER.ORG/SPACE](https://krauseinnovationcenter.org/space)

- 31. Based on the description of the program above/on the KCI website, please describe why you want to participate in this program and how you plan to use what you learn. Please limit your response to 300 words or less. *

- 32. Are you applying to this program as a part of a team? *

Mark only one oval.

Yes

No

- 33. If so, please name the other people on your team.

*Please note that each person on your team must submit **their own individual** application!*

34. Did one or more of the following KCI Ambassadors encourage you to apply to this program? *

Check all that apply.

- Erin Asamoto
- Terry Lien
- Stacy Kratochvil
- Sandhya Raman
- Verity Oliff
- No

35. I understand and agree to attend and participate in ALL DATES of the program unless a personal or family emergency occurs. *

Please review the dates above and make absolutely sure you can commit to them before selecting "Yes"! The SPACE program meets on both the June and July dates.

Mark only one oval.

- Yes

36. Would you like to apply to another KCI program? *

Mark only one oval.

- Yes, please take me back to the program selection page *Skip to question 23*
- No, please take me to the final confirmations and agreements *Skip to question 44*

STEAM- Specific Questions

37. Which section of STEAM are you applying for? *

Mark only one oval.

- Hybrid- Bay Area: In person at the Krause Center in Los Altos, CA June 24 and 26-28, and Online June 29-30
- Hybrid- Central Valley: In person at Kings County COE (Central Valley) June 20, 22, 23, and Online June 24, and Online June 29-30
- I am open to either section

Program Description

Please read the program information below in its entirety. You can also [view it in a new tab here](#).

ARE YOU READY TO LEAN INTO YOUR

STEAM

LEADERSHIP IDENTITY?



Here at the **Krause Center for Innovation** we specialize in professional learning for educators. The **STEAM Leadership Program** is designed for pre-service and in-service teachers who want to grow as STEAM leaders in their schools, districts, and/or counties. The program focuses on two topics: STEAM integration and relevant activities through a **DEI (Diversity, Equity & Inclusion)** lens so that all students feel like they can achieve success. Under the guidance of our program instructors, participants dive into a variety of **hands-on activities and book studies** focused on DEI principles, empowering readers to think critically about community outreach, social-emotional learning, and instructional materials.



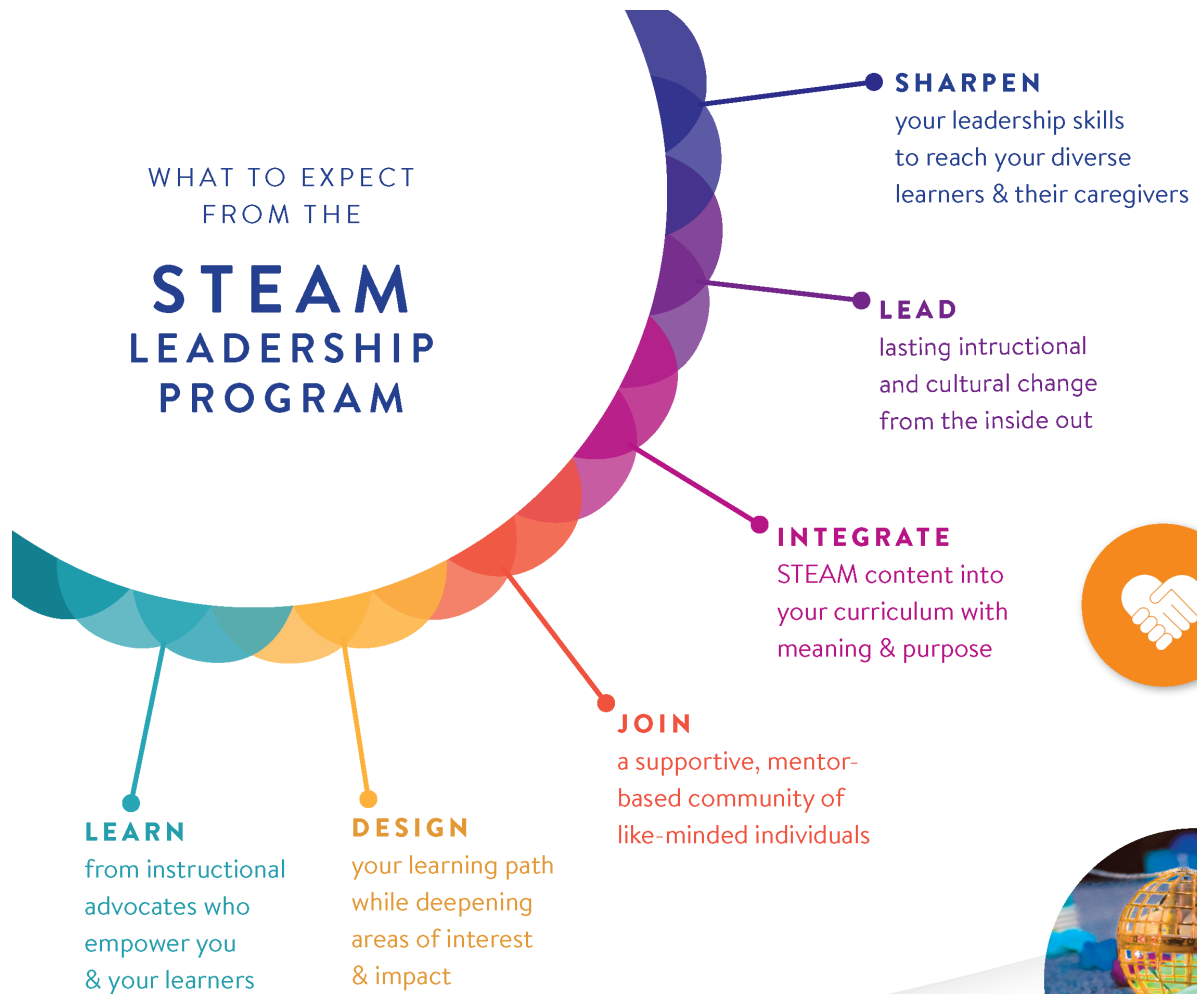
SCIENCE TECHNOLOGY ENGINEERING ART MATH



KRAUSE CENTER *for* **INNOVATION**

WHAT TO EXPECT FROM THE

STEAM LEADERSHIP PROGRAM



LEARN MORE ABOUT KCI'S STEAM LEADERSHIP PROGRAM AND APPLY FOR THE NEXT COHORT!



[KRAUSEINNOVATIONCENTER.ORG/STEAM](https://krauseinnovationcenter.org/steam)

WHAT IS THE STEAM LEADERSHIP PROGRAM?

The STEAM Leadership Program is about leaning into our individual strengths and identities and learning from each other. With a focus on equity leadership, all participants in the program have an opportunity to showcase their passions and expertise in order to help support the cohort with cohesive STEAM integration. Through personal identity exploration we gain a deeper understanding about ourselves in order to develop our STEAM identities so we can assist our students and staff in their own identity journey.



Additionally, each STEAM Leadership participant earns a California Certificate of Achievement as a STEAM Instructional Leader (plus 12 continuing ed units) upon program completion.

WHAT PEOPLE ARE SAYING

WHAT MAKES STEAM LEADERSHIP UNIQUE?

The STEAM Leadership Program is unique because it is built from the strength of the participants. The participants experience STEAM activities through multiple lenses: equity, identity, and social-emotional learning. Participants have an opportunity to learn as students and debrief as educators, with space to discuss, adapt and adjust the various activities for their audience. They are given the gift of time to engage in a passion project in order to deepen their knowledge and improve their craft. Thoughtful and courageous conversations, the ability to showcase strengths and learn from each other, and sharing space with like-minded educators are the reasons why this program makes an impact on educators and their learners.

“
I valued the conversations we had to support social-emotional learning, ideas to support inclusion, and the opportunity to better focus on who I am so I can be a better person for my students.”

“
I have heard the word 'equity' for a long time, but this course gave me clarity and a framework for bringing equity into my classroom.”

“
STEAM is not my strong suit, but this program really increased my confidence! I'm already trying new things out in class with my kids. This training was so inspirational and motivating.”

STEAM PILLARS

- Integration
- Application
- Leadership
- Learning
- Identity



STEAM Leadership welcomes participants throughout the state of California who serve K-14 learners in all capacities!

- 38. Based on the description of the program above/on the KCI website, please describe why you want to participate in this program and how you plan to use what you learn. Please limit your response to 300 words or less. *

- 39. Are you applying to this program as a part of a team? *

Mark only one oval.

- Yes
- No

- 40. Did one or more of the following KCI Ambassadors encourage you to apply to this program? *

Check all that apply.

- Erin Asamoto
- Terry Lien
- Stacy Kratochvil
- Sandhya Raman
- Verity Oliff
- No

41. If so, please name the other people on your team.

*Please note that each person on your team must submit **their own individual** application!*

42. I understand and agree to attend and participate in ALL DATES of the program unless a personal or family emergency occurs. *

Please review the dates above and make absolutely sure you can commit to them before selecting "Yes"!

Mark only one oval.

Yes

43. Would you like to apply to another KCI program? *

Mark only one oval.

Yes, please take me back to the program selection page *Skip to question 23*

No, please take me to the final confirmations and agreements *Skip to question 44*

Confirmations
and
Agreements

Please confirm your understanding and commitment to complete the general KCI Program requirements.

44. I understand and agree to attend and participate in the Virtual Orientation on Saturday, May 20, 2023 from 10 AM to 3 PM. *

Mark only one oval.

Yes

45. I understand and agree that if I am unable to make a day, that I am responsible for any and all work that was completed and agree to follow-up with an instructor. *

Mark only one oval.

Yes

46. I understand and agree that if I do need to miss a meeting that I will give at least two weeks notice to the program director. *

Mark only one oval.

Yes

47. I understand that there will be four follow-up Saturdays (2 during Fall Quarter 2023 TBD and 2 during Winter Quarter 2024 TBD) that I will be asked to attend. (Directors will coordinate this date during the Summer Session so as many participants as possible will be able to participate) *

Mark only one oval.

Yes

48. I understand and agree to attend the KCI graduation/showcase in-person or virtually on Saturday, March 23, 2024. *

Mark only one oval.

Yes

49. I understand and agree that if I am unable to complete the program for any reason, the Krause Center for Innovation has authority to ask for reimbursement for any unit and enrollment fees that have accrued. *

Mark only one oval.

Yes

50. I understand and agree that I will need to pay a \$75, non-refundable fee to participate in the program (after acceptance is sent and willingness to participate has been agreed upon). *

Mark only one oval.

Yes

51. I agree that all information provided is true. *

Mark only one oval.

Yes

This content is neither created nor endorsed by Google.

Google Forms

